

TH63

Telehandler



Rated Capacity	2721 kg	6000 lb
Max Lift Height	12.5 m	41 ft
Capacity at Max Height	2721 kg	6,000 lb
Max Forward Reach	8.2 m	27 ft

Cat [®] 3054 T Engine		
Gross Power	78 kW	105 hp
Operating Weight	9200 kg	20,282 lb
Turning Radius	3.8 m	12 ft 6 in
Frame Leveling	± 10 degrees	

Engine

Caterpillar 3054T turbocharged, watercooled, 4-stroke, 4-cylinder diesel engine.

Ratings at 2200 rpm	kW	hp
Gross Power	78	105
Net Power (SAE J1349)	75	101

Ratings at 1600 rpm	Nm
Net Torque	365 Nm (269 ft-lb)

Dimensions

Bore	100mm (3.94 in)
Stroke	127mm (5 in)
Displacement	4.0 liter (243 in ³)

Hydraulic System

Load-sensing, variable displacement, axial piston pump. Flow share valve for simultaneous operation of boom functions.

Single lever pilot operated joystick. Lock valves on all load holding cylinders.

System Pressure	250 bar (3625 psi)
Max Pump Flow	105 l/min (28 gpm)
Auxiliary Hyd Flow	71/min (18.8 gpm)
Auxiliary Pressure	124 bar (1800 psi)

Hydraulic Cycle Time (approx.)

Boom Raise	13 sec
Boom Lower	10 sec
Tele Out	15 sec
Tele In	12 sec

Refill Capacities

Fuel Tank	117 L (31 gal)
Hydraulic Tank	136 L (36 gal)

Brakes

Features

- Fully enclosed oil disc brakes on both axles
- Power-assisted, foot-operated service brakes
- Selectable transmission disconnect on foot-brake operation
- Hand-operated modulating park-brake operates on front axle brake discs
- Transmission interlock on parking brake

Powertrain & Axles

All mechanical, full time all wheel drive, powershift transmission with 4 forward and 3 reverse gears.

- Outboard planetary drive axles
- Free oscillating rear axle, fixed front axle
- Front axle differential lock

Wheels & Tires

Four, equal sized wheels and tires with axle mounted, fenders.

Standard:

Construction Tread 13.0-24 12PR

Optional:

Construction Tread 15.5-25 12PR

Construction Tread 15.5 R25

Standard Equipment

Standard equipment may vary. Consult your Caterpillar Dealer for specifics.

Air Cleaner, radial seal with indicator
Alternator, 55amp (12 volt)
Antifreeze (-37° F)
Auxiliary hydraulics at boom head
Back-up alarm
Battery, 12 volt, 950CCA
Differential lock (front axle)
Frame leveling ± 10° with lock valve
Instrumentation:
 Engine Coolant gauge
 Transmission Oil temperature gauge
 Fuel level gauge
Warning lights, 6 total
Hydraulic quick coupler
Joystick control, pilot operated
Mudguards (4)
Mirror, rear view (1), right side
Radiator dust screen
Retrieval hitch with pin
ROPS/FOPS canopy
Seat, suspension with 3 in. retractable seat belt
Engine starting system, cold weather
Steering column tilt
Steering system, three modes
Transmission oil cooler
Transport tie-down points

Boom

Features

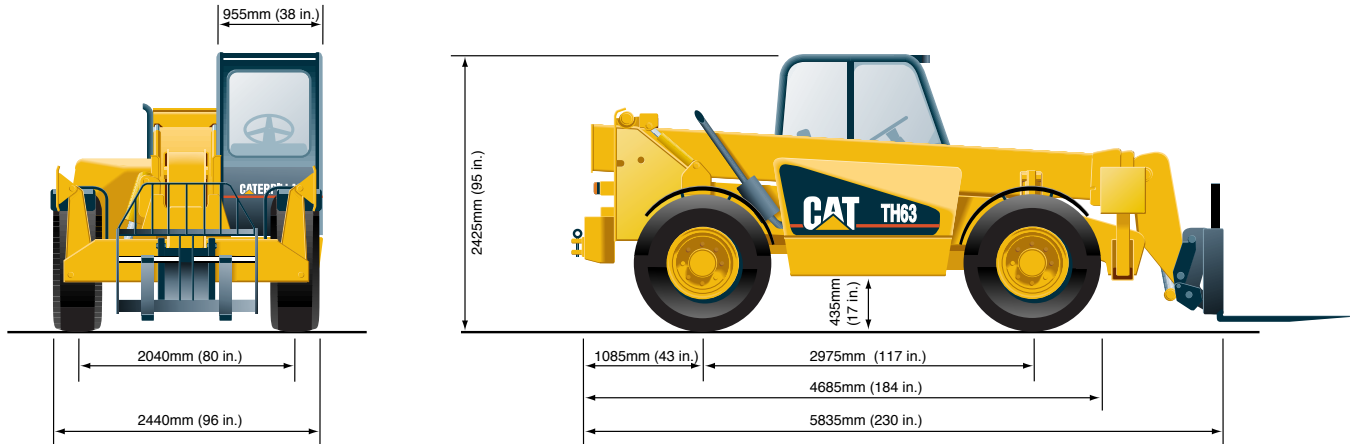
- Synchronized, three-section boom with hydraulic work tool coupler
- Non-metallic, adjustable boom wear pads
- Lock valves on all load holding cylinders
- 140° fore/aft coupler tilt range
- Selected fore/aft coupler tilt maintained hydraulically

Work Tools

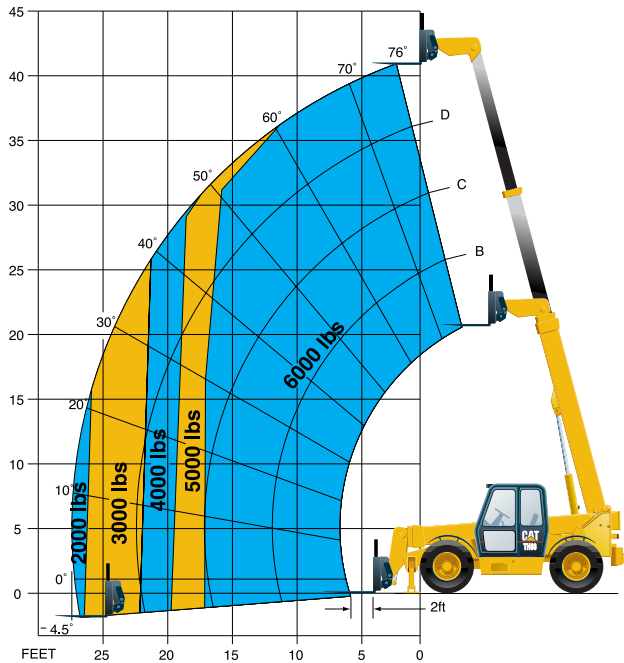
Choose from a wide variety of work tools designed specifically for Telehandlers.

- General Purpose Bucket
- Grapple Bucket
- Light Material Bucket
- Material Handling Bucket
- Multi Purpose Bucket
- Fixed Carriages
- Rotate Carriages
- Block Forks
- Pallet Forks
- Lifting Hook
- Self Tipping Hopper
- Truss Boom
- Access Platform

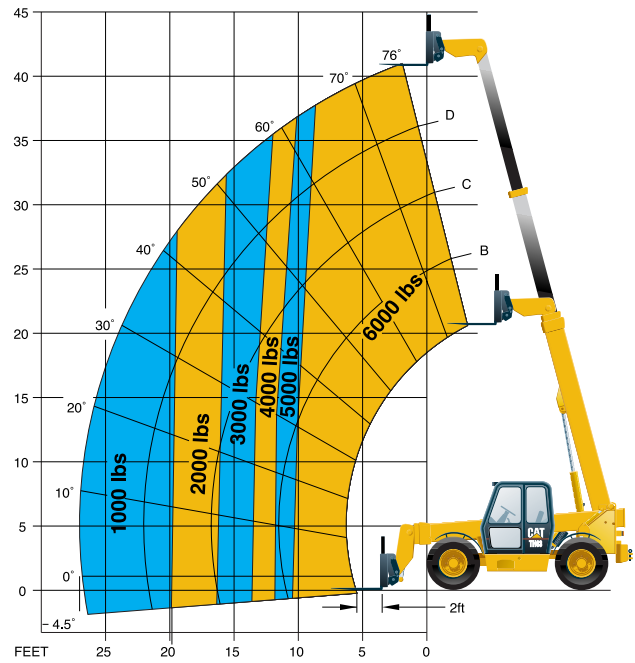
Dimensions



Operating Specs



Machine with stabilizers down



Machine not equipped with stabilizers

Performance

	Stabilizers Down	Stabilizers Up	Without Stabilizers
Rated Load Capacity	2721 kg (6000 lb)	2721 kg (6000 lb)	2721 kg (6000 lb)
Maximum Lift Height	12.5 m (41 ft)	12.5 m (41 ft)	12.5 m (41 ft)
Capacity at Maximum Lift Height	2721 kg (6000 lb)	2721 kg (6000 lb)	2721 kg (6000 lb)
Maximum Forward Reach	8.2 m (27 ft)	8.2 m (27 ft)	8.2 m (27 ft)
Capacity at Maximum Reach	907 kg (2000 lb)	272 kg (600 lb)	453 kg (1000 lb)

Specifications shown are for machines equipped with a 48-inch fixed carriage. Performance will vary with different work tools. Stabilizers are optional on the TH63.

www.CAT.com
© 2000 Caterpillar
Printed in U.S.A.

AEHQ9031-01 (08-00)
(Replaces AEHQ9031)

Featured machines may include additional equipment only for special applications.
See your authorized Caterpillar Dealer or Cat rental store for available options.
Materials and specifications are subject to change without notice.