

RTH 4.18 SMART

MACHINE MODEL	Rotating telescopic handler	RTH 4.18 Smart	
	Maximum lifting capacity	8.800 lbs (center of gravity 24 in)	
	Maximum lifting height	58 ft	
	Rotation	400° (limited)	
ENGINE - DEUTZ	Type	Deutz TCD 3.6 L4 - stage IV	Deutz TCD 3.6 L4 - stage 3A compliant
	Rated power	55,4 kW - 74 HP to 2.200 rpm	55,4 kW - 74 HP to 2.200 rpm
	Maximum torque	390 Nm at 1.300 rpm	390 Nm at 1.300 rpm
	Displacement	0,97 US gal	0,97 US gal
	Cylinders	4 in line	4 in line
	Fuel	Diesel direct injection turbocharged	Diesel direct injection turbocharged
	Cooling system	Water - intercooler	Water - intercooler
TRANSMISSION	Type	Hydrostatic	
	Model	Bosch - Rexroth	
	Maximum pressure	500 bar	
	Displacements	Variable displacement pump electronically controlled. Variable displacement motor	
	Gear box	2 speeds forward-reverse	
AXLES AND BRAKES	Type	Axles with epicyclic reduction gear	
	Rear axle	Oscillating and steering with hydraulic locking	
	Front axle	Steering	
	Service brake	Hydraulically activated, oil-immersed multi-disc type on each axle	
	Parking brake	Hydraulic with negative action	
	Tyres dimensions	18 R19,5 (445/65 R19,5)	
PERFORMANCE	Max. travel speed	15 Mph	
	Drawbar pull	83 kN	
	Gradeability	41%	
	Turning radius (end of forks)	240,7 in	
WEIGHTS	Total unladen	32.518 lbs	
	Front axle unladen (boom retracted and lowered)	15.433 lbs	
	Rear axle unladen (boom retracted and lowered)	17.085 lbs	
TANKS CAPACITIES	Fuel tank	47 US gal	47 US gal
	AdBlue	3 US gal	n.a.
	Hydraulic oil tank	43,5 US gal	43,5 US gal
	Engine oil tank	2 US gal	2 US gal
	Cooling liquid	6 US gal	6 US gal
HYDRAULIC CIRCUIT	Max. operating system pressure	270 bar	
	Circuit type	Load sensing	
	Service pump	Gear pump	
	Controls for boom and turret movements	Danfoss - Electroproportional valve SIL 2	
	Controls for stabilizers	Bosch Rexroth - Electro-hydraulics controls	
Movements control	2 joystick Danfoss with two shafts with dead man safety device - Management with CAN bus technology		
CONFORMTY TO STANDARDS	EN 13849: concerning the safety of all controls of the machine EN 13000: concerning the standard of hydraulic cranes EN 280: concerning the standard of aerial platforms FOPS/ROPS EU 2016/1628: concerning engine emissions standards EN 1459-2: concerning the standard of self-propelled variable reach trucks		

The data in this brochure are informative and subject to change without notice



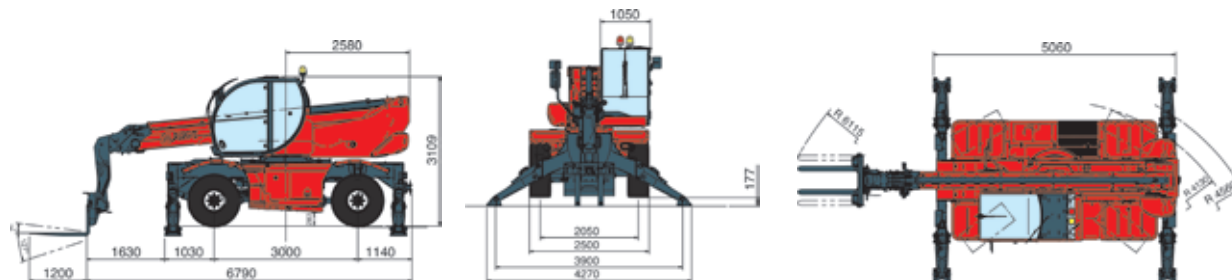
MAIN SECTORS



CONSTRUCTION



INDUSTRY



Magni Telescopic Handlers srl

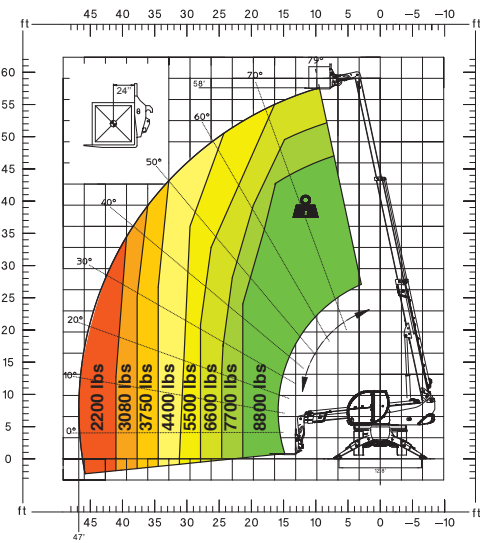
Via Magellano, 22 - 41013 Castelfranco Emilia, Modena, Italia - Tel: +39 059 8630811 - Fax: +39 059 8638012
commerciale@magnith.com - www.magnith.com



Maximum lifting height: 58 ft
Maximum reach: 47 ft
Electronically controlled hydrostatic transmission
Automatic levelling device
Pivoting stabilizers

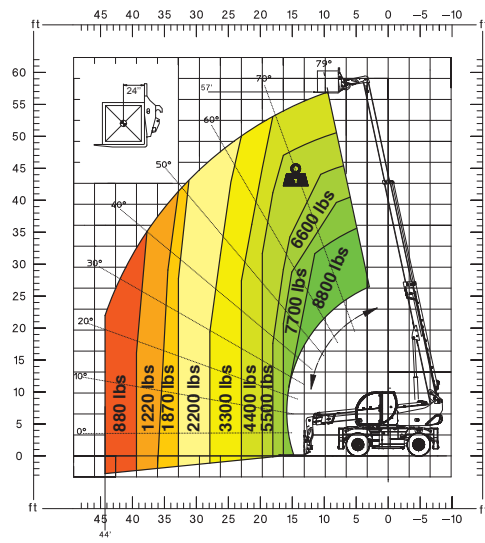
ON STABILIZERS

360° FULLY EXTENDED STABILISERS
LOAD CHART WITH FORKS



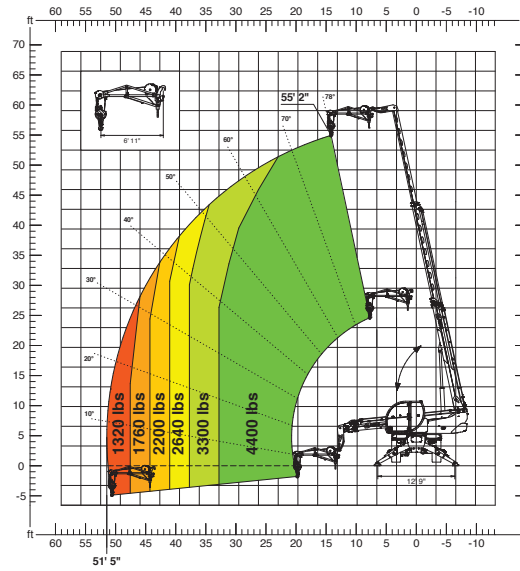
ON TYRES

FRONTAL POSITION LOAD CHART ON
TYRES WITH FORKS



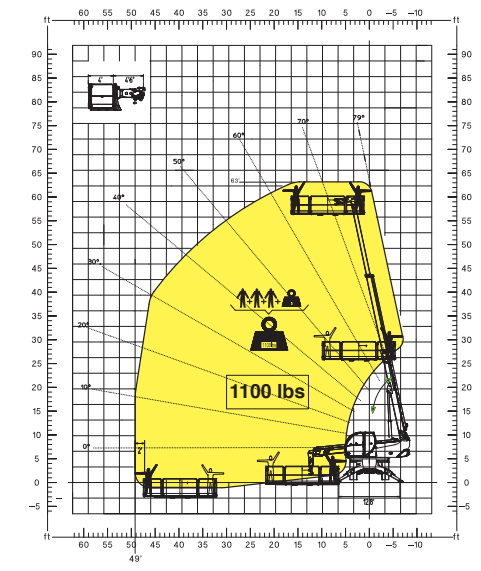
JW 2000

JIB WINCH **4.400 lbs**



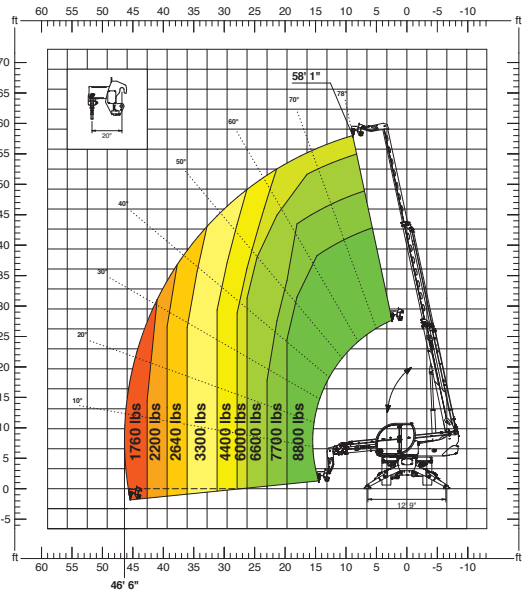
REP 2-4,5

ROTATING EXTENDABLE
MEN PLATFORM **1.100 lbs**



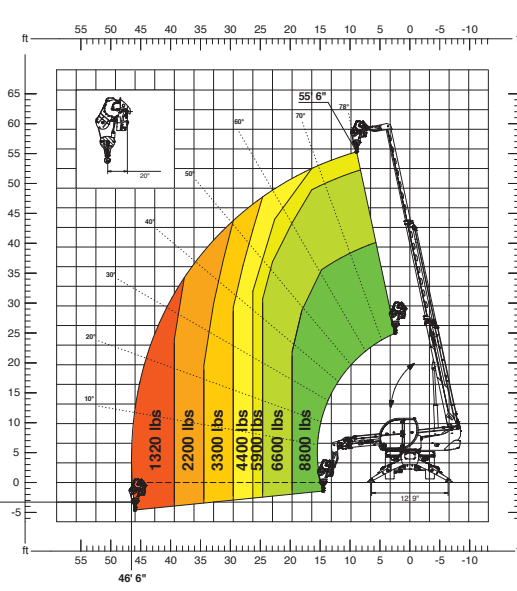
H 4

HOOK **8.800 lbs**



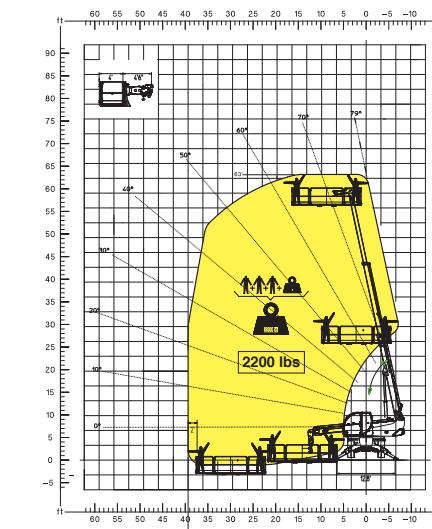
W 5

WINCH **8.800 lbs**



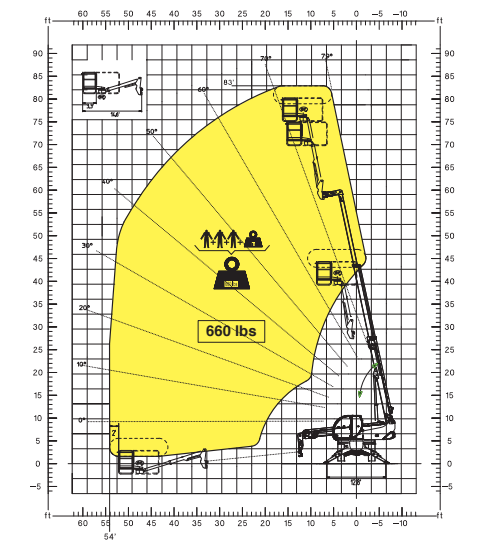
REP 10.2-4,7

ROTATING EXTENDABLE MEN
PLATFORM **2.200 lbs**



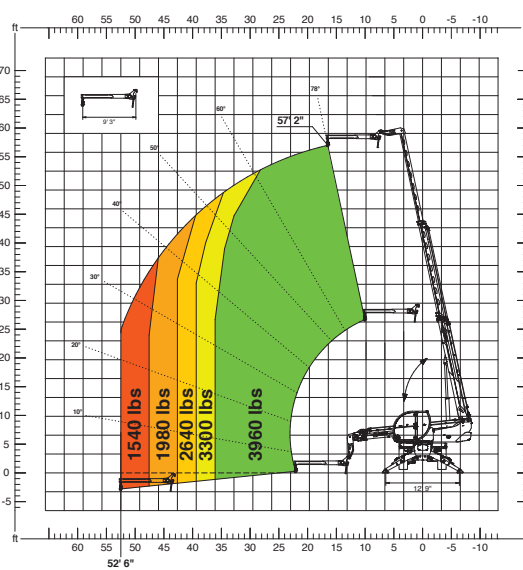
TP

TELESCOPIC PIVOTING MEN PLATFORM WITH
180° ROTATION



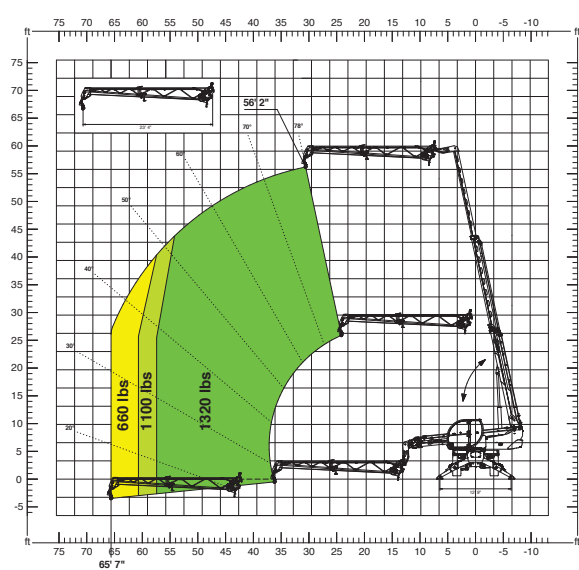
J 2000

JIB **3.960 lbs**



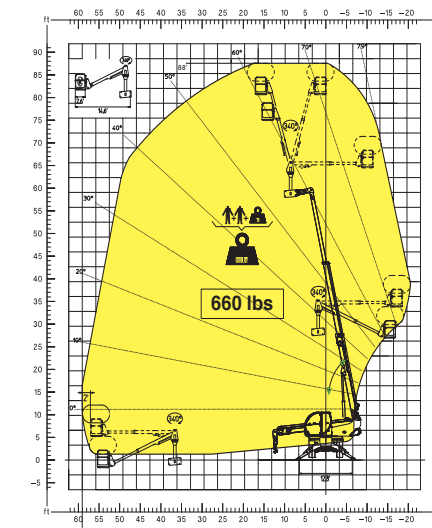
JW 800

JIB WINCH **1.320 lbs**



TPO-U

TELESCOPIC PIVOTING MEN PLATFORM OVER-UNDER
WITH 340° ROTATION



TPO-U

TELESCOPIC PIVOTING MEN PLATFORM OVER-UNDER
WITH 340° ROTATION

