

5.21SH



Maximum lifting height: 68.30 ft
Maximum reach: 57.40 ft
Electronically controlled hydrostatic transmission
Automatic leveling device
Scissors stabilizers

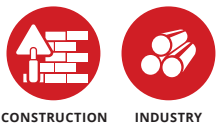
RTH 5.21 SH

MACHINE MODEL	Rotating telescopic handler	RTH 5.21 SH	
	Maximum lifting capacity	11,000 lbs (center of gravity 24 in)	
	Maximum lifting height	68.3 ft	
	Rotation	360° (continuous)	
ENGINE	Type	Deutz TCD 3.6 L4 - stage IV	Deutz TCD 3.6 L4 EDG - stage IIIA compliant
	Rated power	100 kW - 134 HP at 2,200 rpm	100 kW - 134 HP at 2,200 rpm
	Maximum torque	500 Nm at 1,600 rpm	500 Nm at 1,600 rpm
	Displacement	0.97 US gal	0.97 US gal
	Cylinders	4 in line	4 in line
	Fuel	Diesel direct injection turbocharged	Diesel direct injection turbocharged
	Cooling system	Water - intercooler	Water - intercooler
TRANSMISSION	Type	Hydrostatic	
	Model	Bosch - Rexroth	
	Maximum pressure	500 bar	
	Displacements	Variable displacement pump electronically controlled. Variable displacement motor	
AXLES AND BRAKES	Gear box	2 speeds forward-reverse	
	Type	Axles with epicyclic reduction gear	
	Rear axle	Oscillating and steering with hydraulic locking	
	Front axle	Oscillating and steering with automatic levelling +/- 10°	
	Service brake	Hydraulically activated, oil-immersed multi-disc type on each axle	
	Parking brake	Hydraulic with negative action	
PERFORMANCE	Tyres dimensions	445/65 R22,5	
	Max. travel speed	25 Mph	
	Drawbar pull	66 kN	
	Gradeability	44%	
WEIGHTS	Turning radius (end of forks)	227.2 in	
	Total unladen	38,580 lbs	
	Front axle unladen (boom retracted and lowered)	17,636 lbs	
TANK AND SYSTEM CAPACITIES	Rear axle unladen (boom retracted and lowered)	20,945 lbs	
	Fuel tank	47 US gal	47 US gal
	AdBlue	3 US gal	n.a.
	Hydraulic oil tank	43.5 US gal	43.5 US gal
	Engine oil tank	2 US gal	2 US gal
HYDRAULIC CIRCUIT FOR MOVEMENTS	Cooling liquid	6 US gal	6 US gal
	Max. operating system pressure	350 bar	
	Circuit type	Load sensing	
	Service pump	Bosch Rexroth - Variable displacement	
	Controls for boom and turret movements	Danfoss - Electroproportional valve SIL 2	
STANDARDS MET	Controls for stabilizers	Bosch Rexroth - Electro-hydraulics controls	
	Movements control	2 joystick Danfoss with two shafts with dead man safety device - Management with CAN bus technology	
<p>EN 13849: concerning the safety of all controls of the machine EN 13000: concerning the standard of hydraulic cranes EN 280: concerning the standard of aerial platforms FOPS/ROPS EU 2016/1628: concerning engine emissions standards EN 1459-2: concerning the standard of self-propelled variable reach trucks</p>			

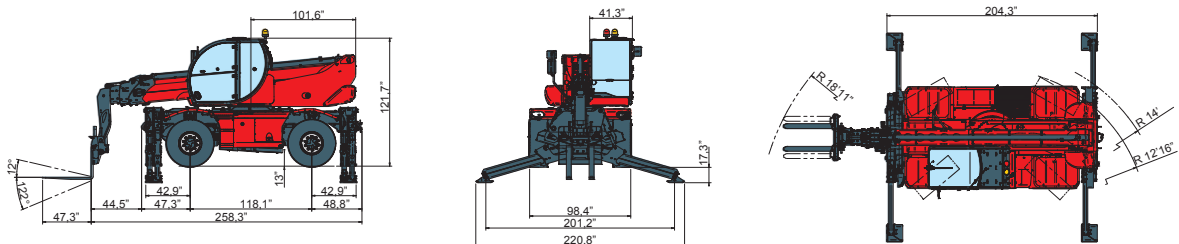
The data in this brochure are informative and subject to change without notice

18C1322 - USA

MAIN SECTORS



CONSTRUCTION INDUSTRY

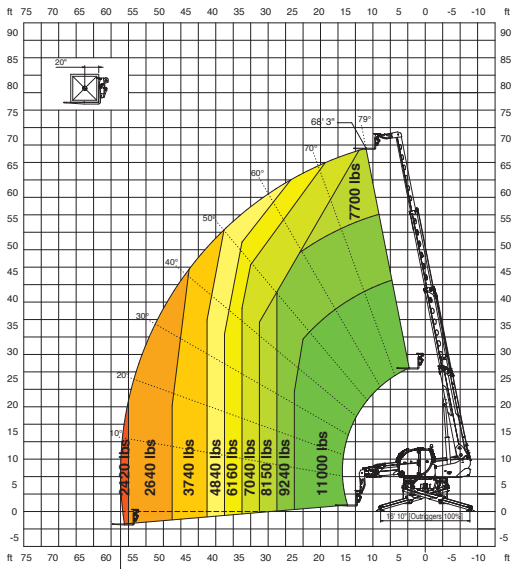


Magni Telescopic Handlers srl

Via Magellano, 22 - 41013 Castelfranco Emilia, Modena, Italia - Tel: +39 059 8630811 - Fax: +39 059 8638012
 commerciale@magnith.com - www.magnith.com

**360° LOAD CHART
ON FULLY EXTENDED STABILIZERS**

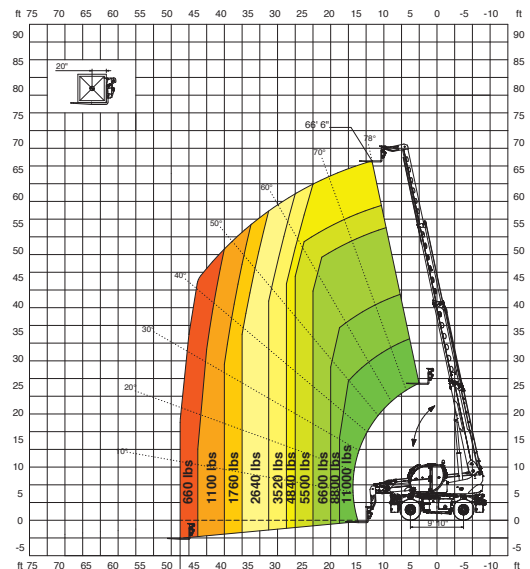
ON STABILIZERS



67' 4"

FRONT LOAD CHART ON TIRES

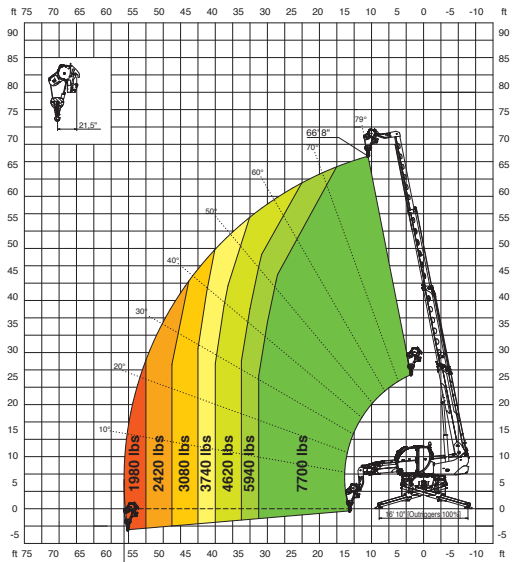
ON TIRES



47' 7"

WINCH 7,700 lbs

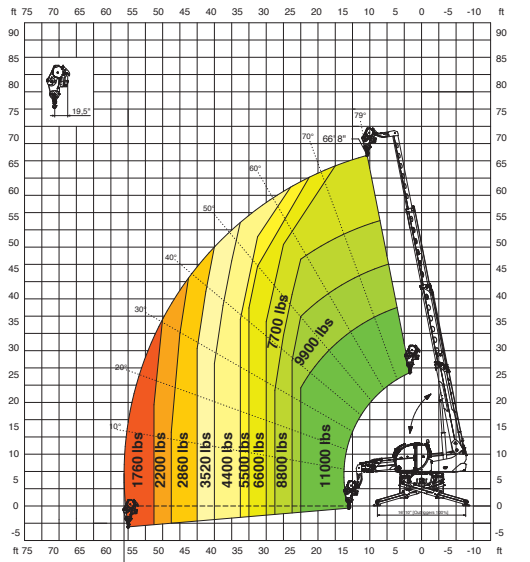
W 3,5



56' 8"

WINCH 11,000 lbs

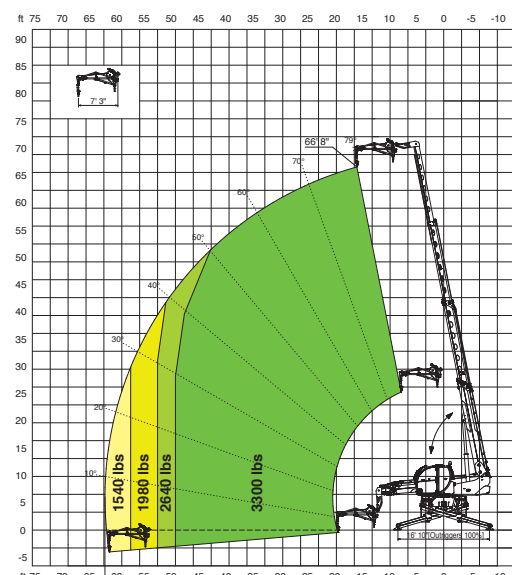
W 5



56' 7"

JIB WINCH 3,300 lbs

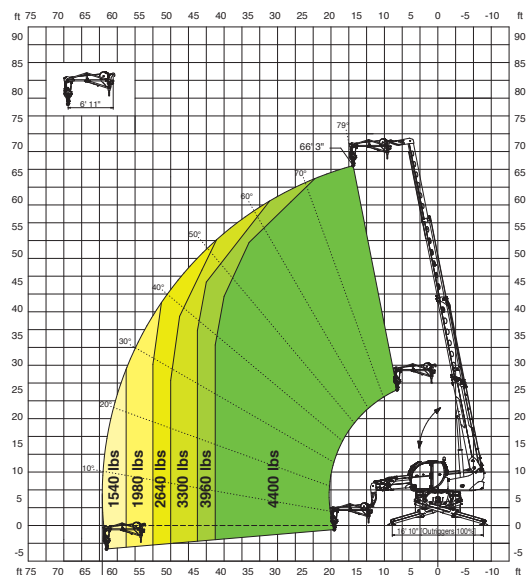
JW 1500



62' 1"

JIB WINCH 4,400 lbs

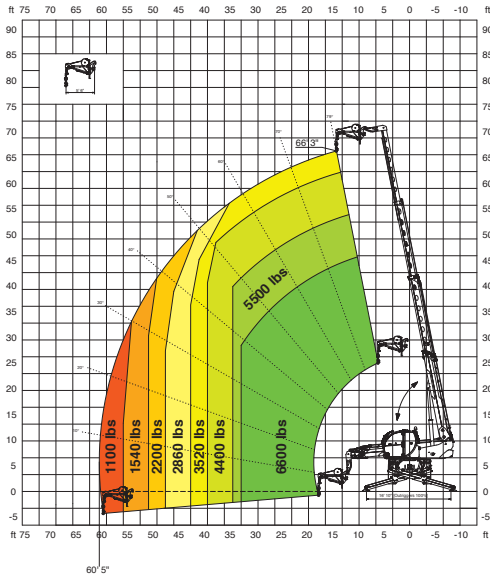
JW 2000



61' 8"

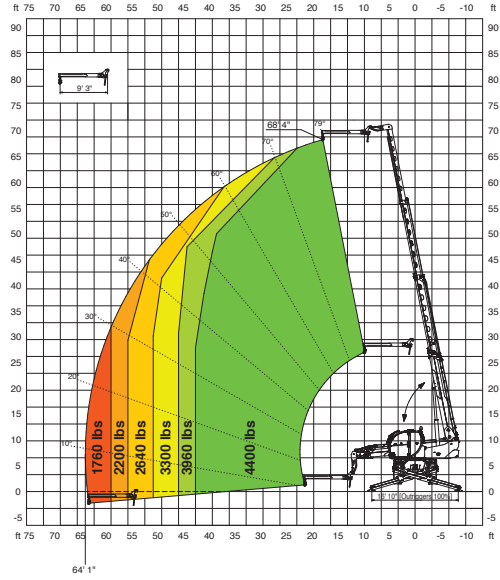
JW 3000

JIB WINCH **6,600 lbs**



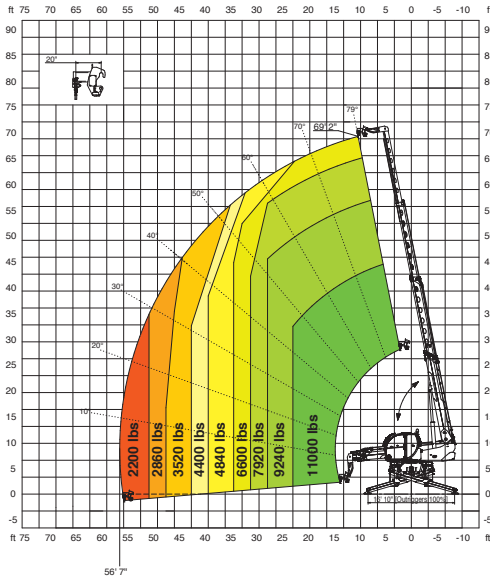
J 2000

JIB **4,400 lbs**



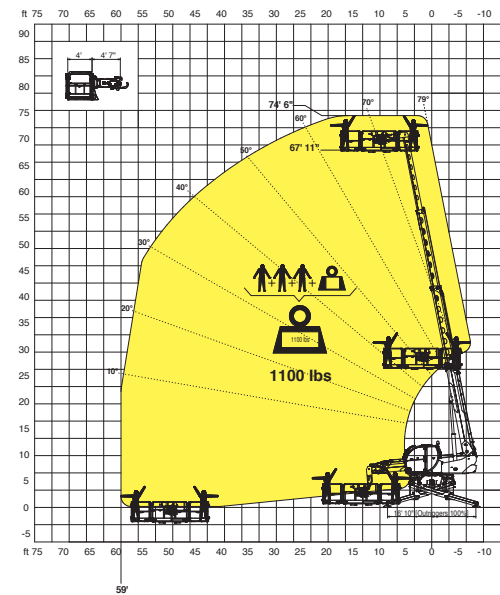
H 5

HOOK **11,000 lbs**



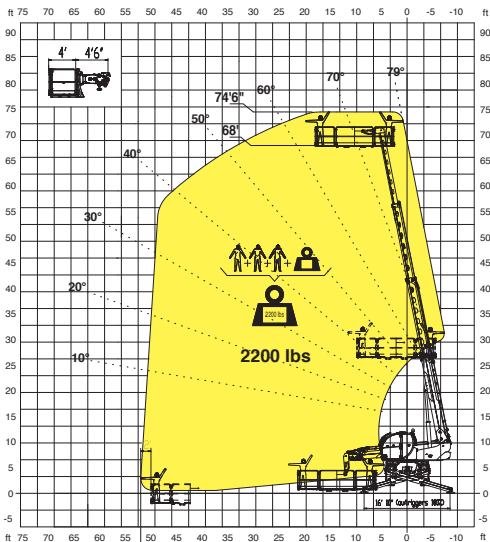
REP 2-4,5

ROTATING EXTENDABLE BASKET **1,100 lbs**



REP 10.2-4,7

ROTATING EXTENDABLE BASKET **2,200 lbs**



REP 8.2-4,7 W0,3

ROTATING BASKET **1,780 lbs** WITH WINCH **660 lbs**

