

SLAYMAKER RENTALS
888-392-4708
slaymakergroup.com
☑ Rentals ☑ Sales ☑ Service ☑ Parts



5.18 SMART

RTH



Maximum lifting height: 57.61 ft
Maximum reach: 46.78 ft
Electronically controlled hydrostatic transmission
Automatic leveling device
Pivoting stabilizers

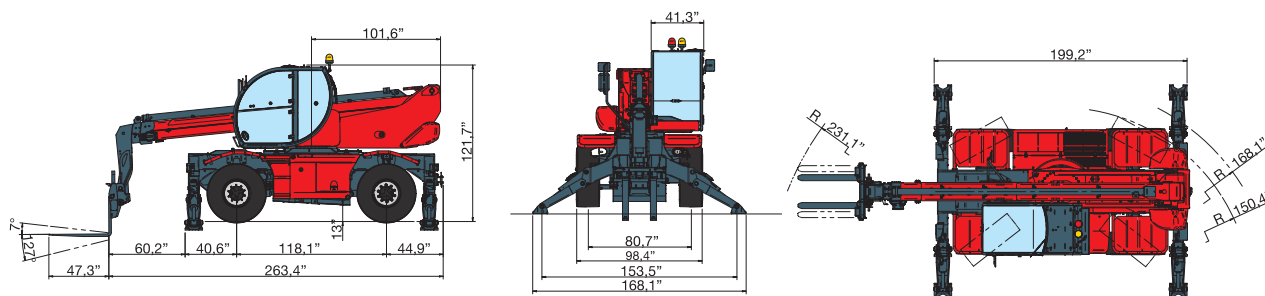
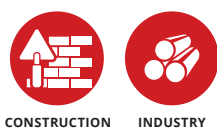
RTH 5.18 SMART

MACHINE MODEL	Rotating telescopic handler	RTH 5.18 Smart	
	Maximum lifting capacity	11,020 lbs (center of gravity 24 in)	
	Maximum lifting height	57.61 ft	
	Rotation	360° (continuous)	
ENGINE	Type	Deutz TCD 3.6 L4 - stage IV	Deutz TCD 3.6 L4 EDG - stage IIIA compliant
	Rated power	100 kW - 134 HP at 2,200 rpm	100 kW - 134 HP at 2,200 rpm
	Maximum torque	500 Nm at 1,600 rpm	500 Nm at 1,600 rpm
	Displacement	0.97 US gal	0.97 US gal
	Cylinders	4 in line	4 in line
	Fuel	Diesel direct injection turbocharged	Diesel direct injection turbocharged
	Cooling system	Water - intercooler	Water - intercooler
TRANSMISSION	Type	Hydrostatic	
	Model	Bosch - Rexroth	
	Maximum pressure	500 bar	
	Displacements	Variable displacement pump electronically controlled. Variable displacement motor	
	Gear box	2 speeds forward-reverse	
AXLES AND BRAKES	Type	Axles with epicyclic reduction gear	
	Rear axle	Oscillating and steering with hydraulic locking	
	Front axle	Steering	
	Service brake	Hydraulically activated, oil-immersed multi-disc type on each axle	
	Parking brake	Hydraulic with negative action	
	Tyres dimensions	445/65 R22.5	
PERFORMANCE	Max. travel speed	25 Mph	
	Drawbar pull	66 kN	
	Gradeability	44%	
	Turning radius (end of forks)	231.1 in	
WEIGHTS	Total unladen	34,460 lbs	
	Front axle unladen (boom retracted and lowered)	16,755 lbs	
	Rear axle unladen (boom retracted and lowered)	17,685 lbs	
TANK AND SYSTEM CAPACITIES	Fuel tank	47 US gal	47 US gal
	AdBlue	3 US gal	n.a.
	Hydraulic oil tank	43.5 US gal	43.5 US gal
	Engine oil tank	2 US gal	2 US gal
	Cooling liquid	6 US gal	6 US gal
HYDRAULIC CIRCUIT FOR MOVEMENTS	Max. operating system pressure	350 bar	
	Circuit type	Load sensing	
	Service pump	Bosch Rexroth - Variable displacement	
	Controls for boom and turret movements	Danfoss - Electroproportional valve SIL 2	
	Controls for stabilizers	Bosch Rexroth - Electro-hydraulics controls	
	Movements control	2 joystick Danfoss with two shafts with dead man safety device - Management with CAN bus technology	
STANDARDS MET	EN 13849: concerning the safety of all controls of the machine EN 13000: concerning the standard of hydraulic cranes EN 280: concerning the standard of aerial platforms FOPS/ROPS EU 2016/1628: concerning engine emissions standards EN 1459-2: concerning the standard of self-propelled variable reach trucks		

The data in this brochure are informative and subject to change without notice

18C1322 - USA

MAIN SECTORS

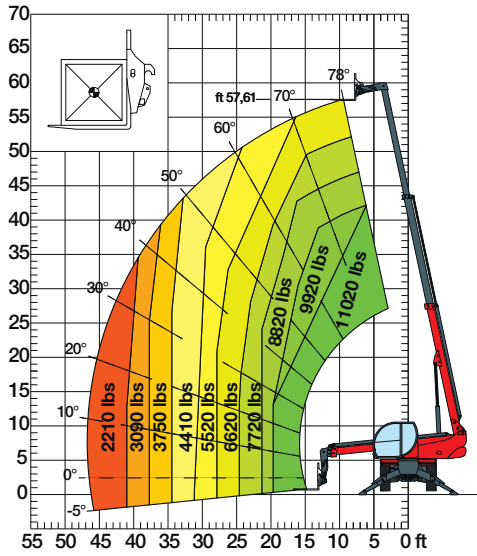


Magni Telescopic Handlers srl

Via Magellano, 22 - 41013 Castelfranco Emilia, Modena, Italia - Tel: +39 059 8630811 - Fax: +39 059 8638012
 commerciale@magnith.com - www.magnith.com

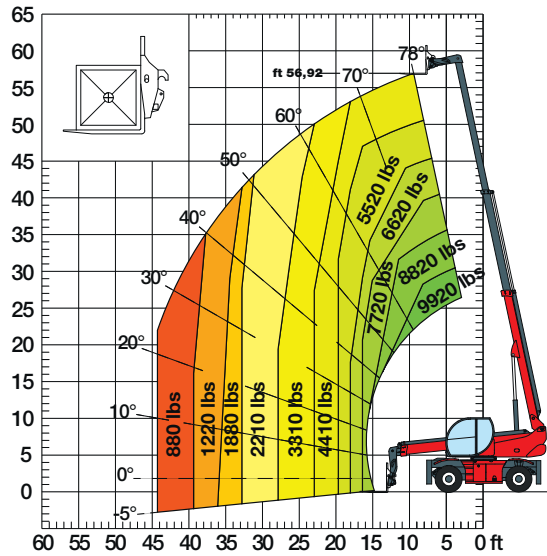
ON STABILIZERS

360° LOAD CHART ON FULLY EXTENDED STABILIZERS



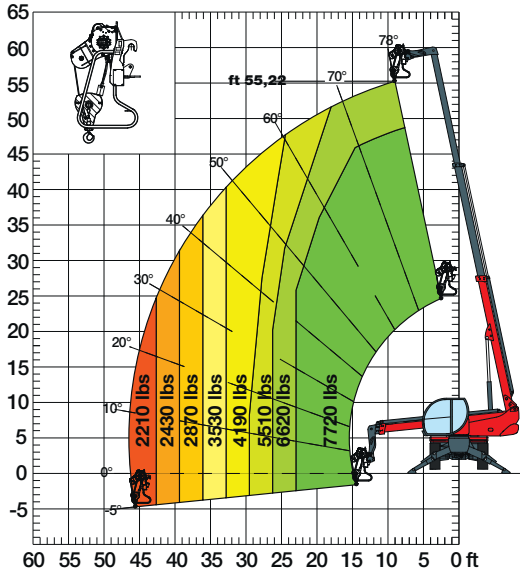
ON TIRES

FRONT LOAD CHART ON TIRES



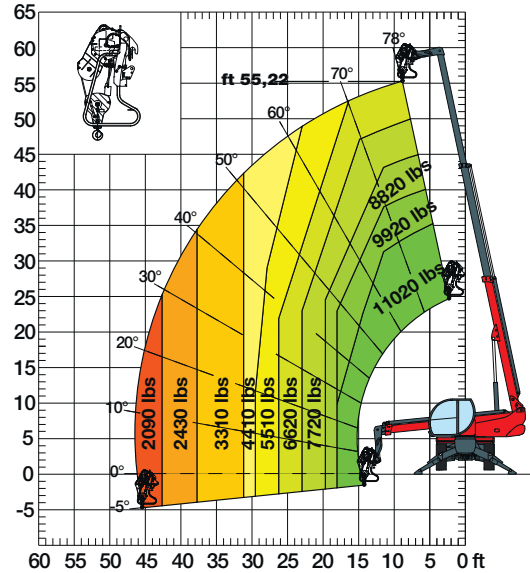
W 3,5

HOOK 7,720 lbs



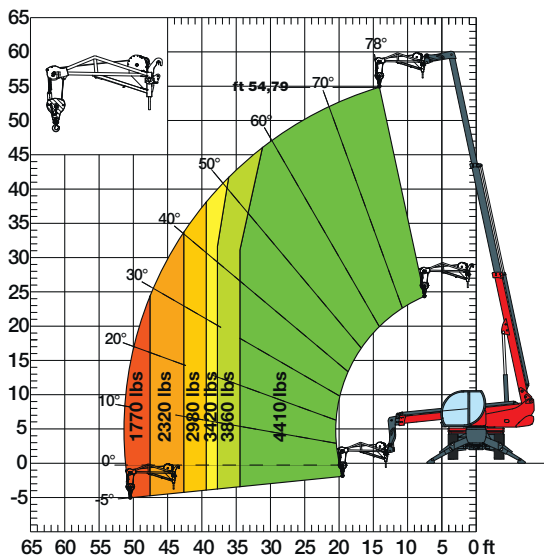
W 5

WINCH 11,020 lbs



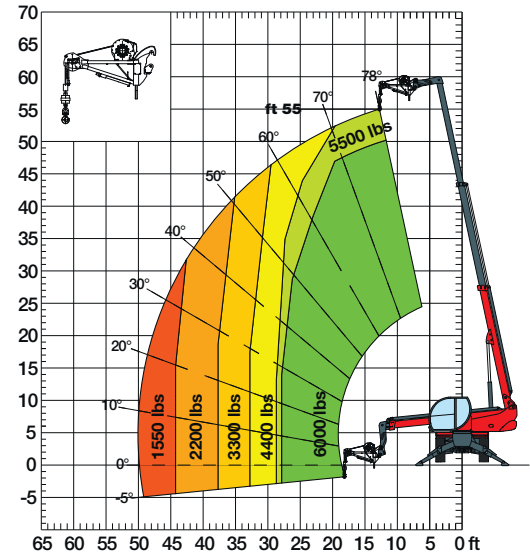
JW 2000

JIB WINCH 4,410 lbs



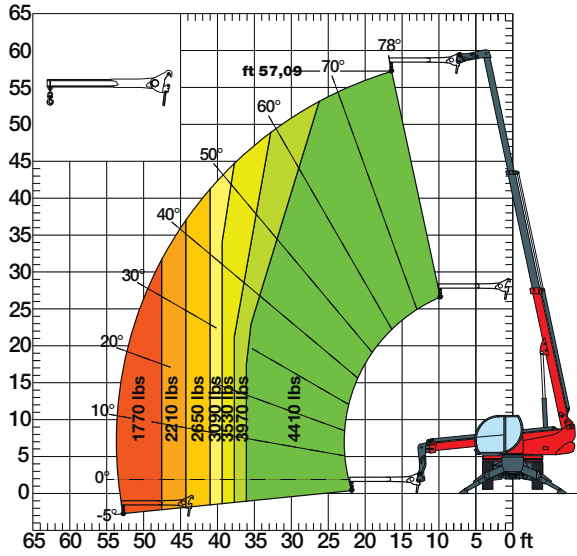
JW 2700

JIB WINCH 6,000 lbs



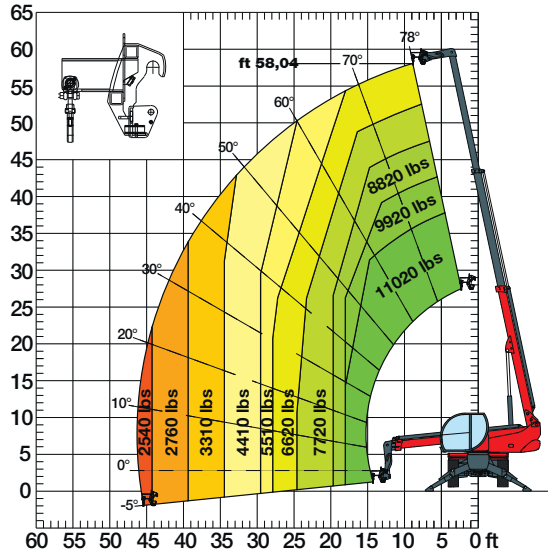
J 2000

JIB **4,410 lbs**



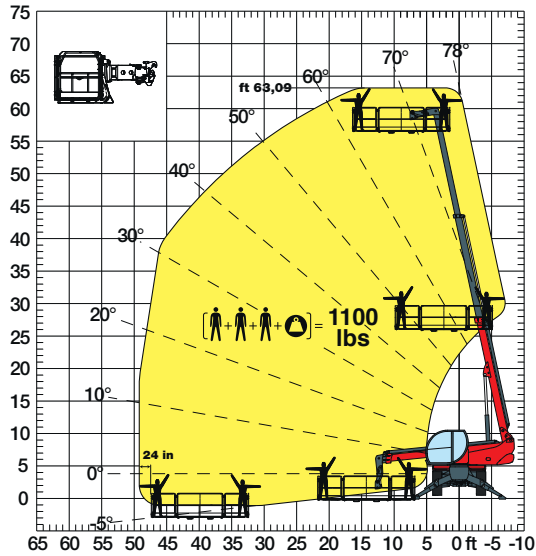
H 5

HOOK **11,020 lbs**



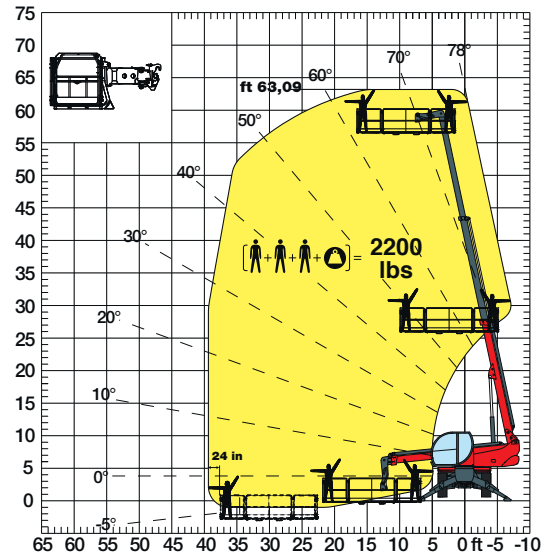
REP 2-4,5

ROTATING EXTENDABLE BASKET **1,100 lbs**



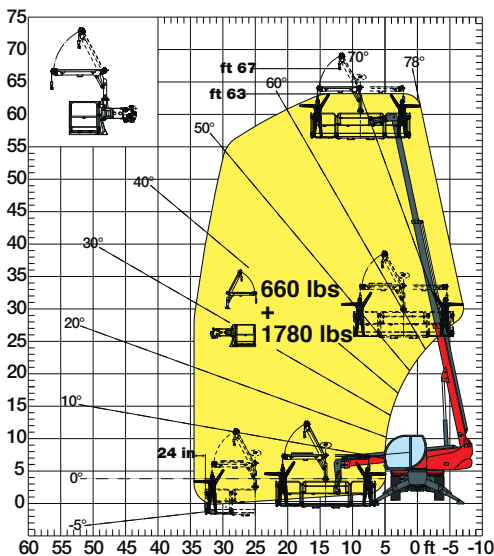
REP 10.2-4,7

ROTATING EXTENDABLE BASKET **2,200 lbs**



REP 8.2-4,7 W0,3

ROTATING BASKET WITH WINCH **1,780 lbs**
WITH WINCH **660 lbs**



RP 2.2

ROTATING NON-EXTENDABLE BASKED **1,100 lbs**

