

# 5.23SH



Maximum lifting height: 76.40 ft  
Maximum reach: 64.60 ft  
Electronically controlled hydrostatic transmission  
Automatic leveling device  
Scissors stabilizers

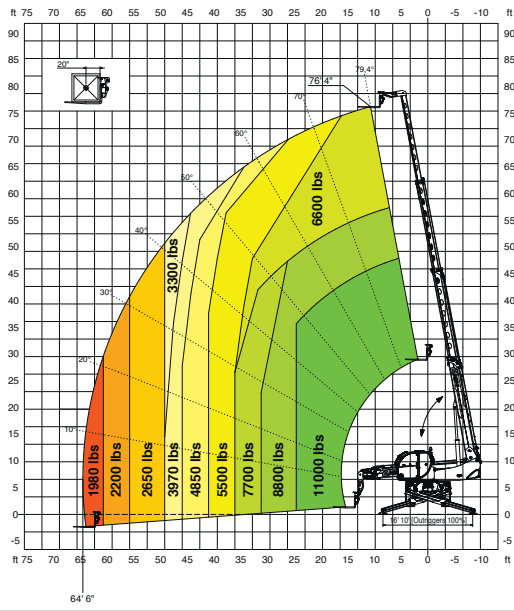
The data in this brochure are informative and subject to change without notice

18C1322 - USA



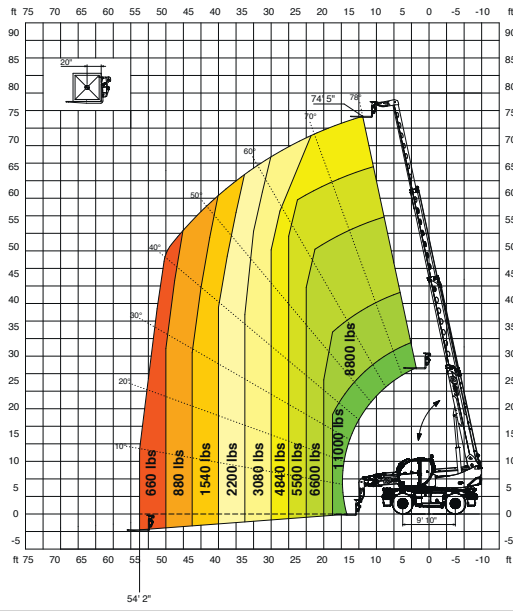
**360° LOAD CHART  
ON FULLY EXTENDED STABILISERS**

**ON STABILISERS**



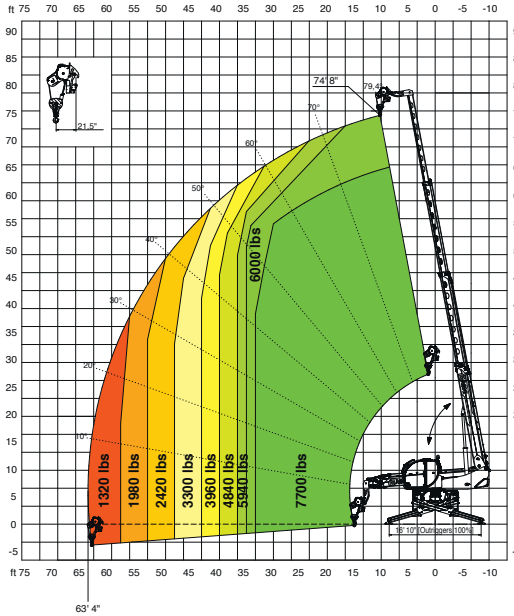
**FRONT LOAD CHART ON TIRES**

**ON TIRES**



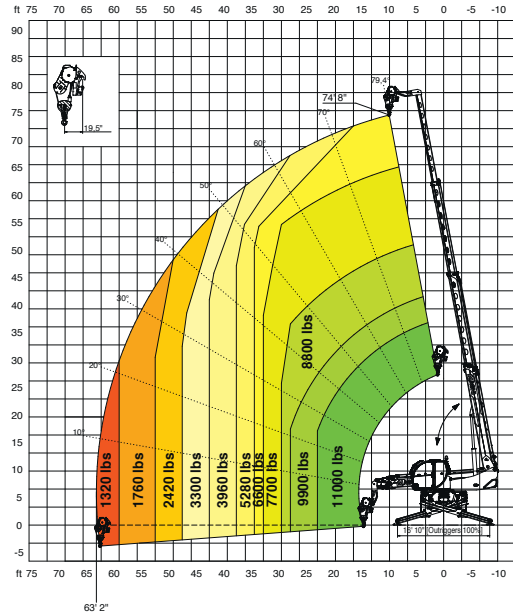
**WINCH 7,700 lbs**

**W 3,5**



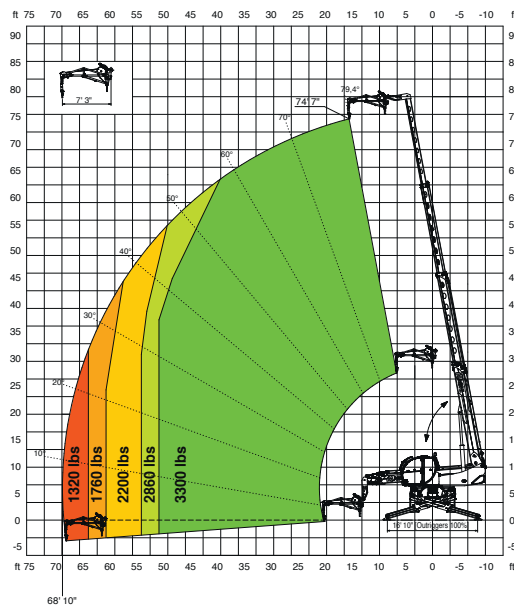
**WINCH 11,000 lbs**

**W 5**



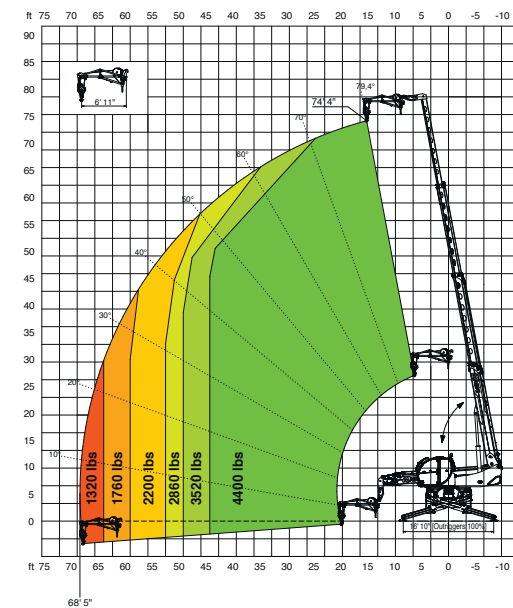
**JIB WINCH 3,300 lbs**

**JW 1500**



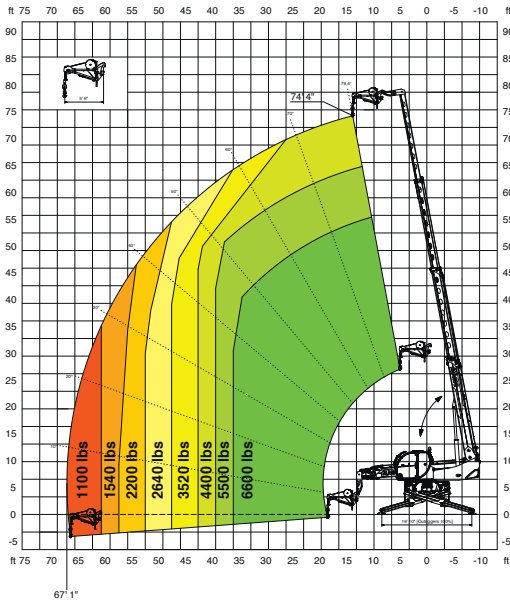
**JIB WINCH 4,400 lbs**

**JW 2000**



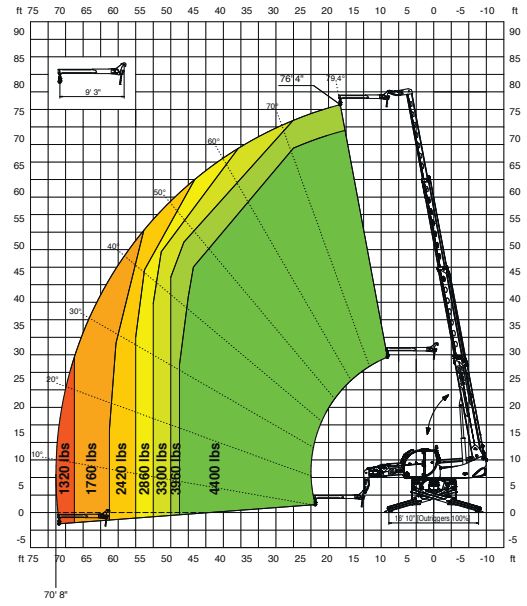
JW 3000

### JIB WINCH **6,600 lbs**



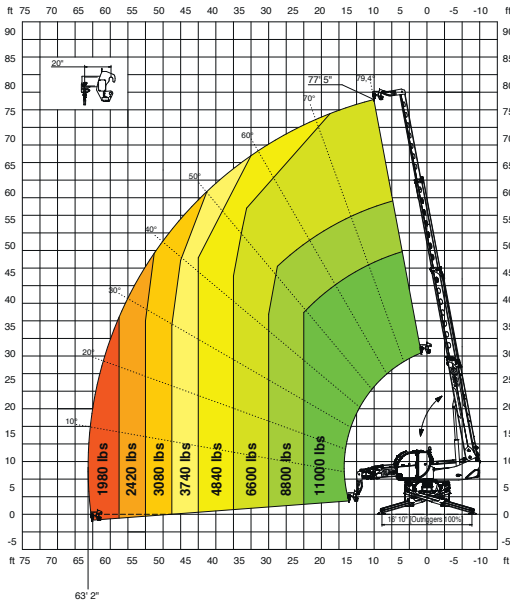
J 2000

### JIB **4,400 lbs**



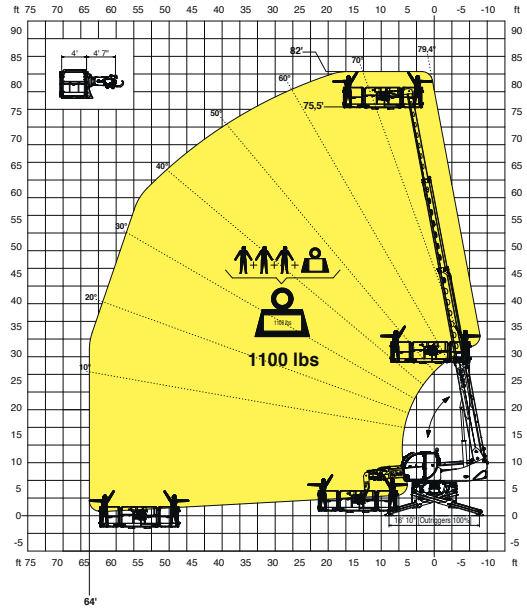
H 5

### HOOK **11,000 lbs**



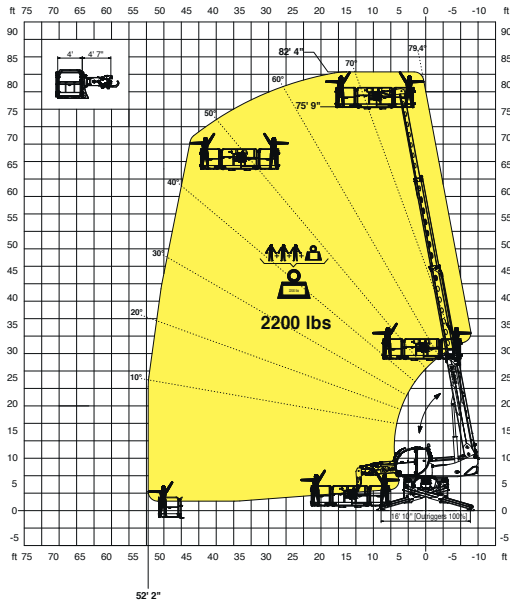
REP 2-4,5

### ROTATING EXTENDABLE BASKET **1,100 lbs**



REP 10.2-4,7

### ROTATING EXTENDABLE BASKET **2,200 lbs**



REP 8.2-4,7 W0,3

### ROTATING BASKET **1,780 lbs** WITH WINCH **660 lbs**

